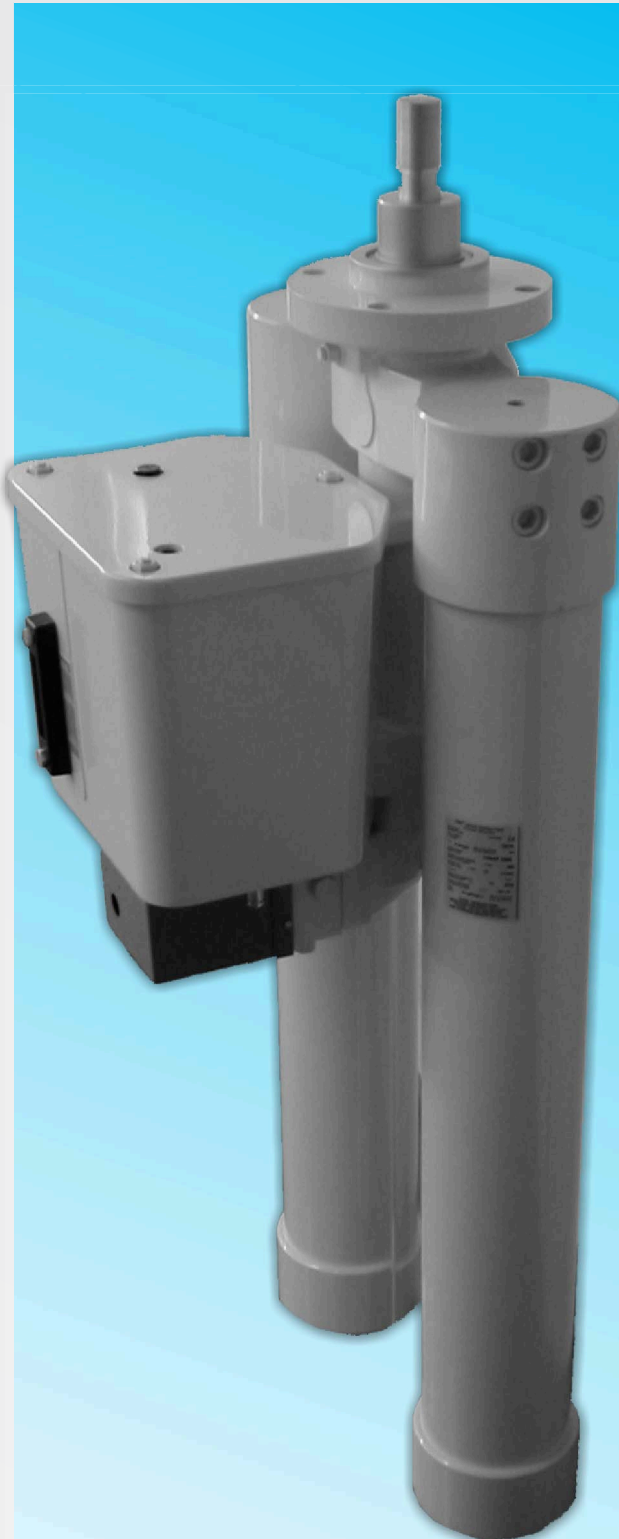


**ETNA**  
INDUSTRIE

# THT DRIVE



## MAIN FEATURES

Drive mechanism type «Plug & Work» including:

- Integration of all functions
- No hydraulic connections or piping
- Outdoor type
- Electrical connections by «Harting» type plugs
- Single phase supply voltage motor (Universal motor)

## DESCRIPTION

The «Plug & Work» drive components are:

- 1 hydraulic return type actuator with integrated opening and closing dash-pot
- 1 command block driven by 2 coils (one for opening / one for closing). Manual trip and close capability
- 1 oil reservoir with filter and level
- 1 or 2 EC approved hydropneumatic accumulators depending on operating sequences required
- 1 high pressure pump unit powered by 1 universal motor
- 1 pressure switch
- 1 safety valve CE

## OPTIONS

- |                              |                           |
|------------------------------|---------------------------|
| - Holding in position        | - Oil level alarm         |
| - Automatic / Manual locking | - SF6 tightness           |
| - Two cycle compliance       | - Time measurement        |
| - Auxiliary contacts         | - Position sensor         |
| - Opening time adjustment    | - Double trip closed coil |

## INSTALLATION and COMMISSIONING

Installation and commissioning are carried out in a few very easy steps:

1. Assemble the drive to the circuit breaker pole
2. Fill the oil reservoir
3. Proceed with electrical connexion of the equipment
4. Proceed with preliminary hydraulic operations
5. Pressurise the drive
6. Ready to operate

# CHARACTERISTICS

## OUTDOOR TYPE

Temperature range : ..... -40 to +60 °C  
Option : ..... -50 °C  
Protection : ..... IP 43

## DIMENSIONS

Drive equipped with 2 x 12,8 l accumulators (HxLxW) ..... 1455x560x500 mm  
Weight : ..... 300 kg

## COMMAND BLOCK

Voltage of coils : ..... 48 to 250 Vcc  
Dead time  
Closing (300W) : ..... 9 ms  
Opening (300W) : ..... 7 to 17 ms  
Fast tripping (option) : ..... 4,5 ms

## ACTUATOR

Stroke : ..... 100 to 200 mm  
Opening energy : ..... 3000 to 18000 J  
Opening speed : ..... up to 12 m/s  
Opening time accuracy at nominal conditions : ..... ± 1 ms

## HYDROPNEUMATIQUE ACCUMULATORS

EC approval  
Maximum allowable pressure PS : ..... 400 bar  
Maximum volume : ..... 2x15 l

## MOTOR PUMP UNIT

Motor voltage : ..... 110 or 220 V<sub>AC/DC</sub>

## PRESSURE SWITCH

Number of contacts : ..... 6  
Contact setting range : ..... 180 to 370 bar  
Sensibility range : ..... 8 - 15 bar  
Incorporated safety valve  
Opening pressure : ..... 400 +0 / -3% bar

## RELIABILITY

Number of operations before inspection : ..... 10.000

*Do not hesitate to contact us*